

LochAnna
— *Handmade* —

BEAUTIFULLY CRAFTED INFRAME KITCHENS



contents

Welcome to LochAnna Handmade kitchens	05
Newbridge	08
Lifford	16
Style and Colour	24
Finishing Touches	28
Handles	38
Guarantee	42



welcome to your handmade kitchen...

We hope you enjoy our new handmade brochure.

When you buy a LochAnna Kitchen you can take comfort that many years of experience and endless amounts of care have gone into creating your dream kitchen - we are kitchen people and we only work with the finest factories and materials.

Our Handmade Collection offers customers a level of detail and sophistication only seen in the luxury and bespoke brands, whilst maintaining the important value for money principles we stand by.

Whilst the Team at LochAnna Kitchens are focussed on offering our customers affordable luxury we know we must deliver kitchens that excel in both style and quality. Functionality and clever use of space are key too, please take some time to consider the broad range of accessories, storage and canopies that allow you to personalise your kitchen.





What is LochAnna Handmade?

LochAnna Handmade centres on solid timber inframe kitchens. Classical, long-standing charm suited to both modern and period homes.

The doors, frames and solid oak or walnut accessories are hand crafted in an artisan factory where a skilled workforce employ a blend of modern and traditional methods to deliver kitchens that not only look stunning but are made to last.

Choice is important, so Handmade offers door frames with and without cockbeads, in a shaker or more contemporary slab finish.

Our commitment to excellence is reflected in the meticulous attention to detail. Every joint, every curve, and every finish is a testament to our dedication to perfection, ensuring your kitchen not only looks stunning but functions seamlessly.



Hardwood Timbers

We take pride in our commitment to sustainability. LochAnna Handmade kitchens are crafted from responsibly sourced timber, reflecting our dedication to environmental stewardship without compromising on luxury.

We carefully select our wood from all over the world, searching out the best European Oak and Ash for the grained effect doors, and Beech in the smooth finishes. Each piece of timber is carefully selected so you can sit back and enjoy your finished kitchen and know you've got the best of the best.

Colours and finishes

This is where you can make a statement or go for a single, subtle, more neutral shade. Choose from a blend of two or even three colours – your Handmade Dealer will be able to help you refine your choices. Handmade offers a range of 33 carefully chosen, hardwearing paint finishes as well as a solid European oak.

If you have your heart set on a particular colour, we will paint match to your exact requirements. The possibilities really are endless.



For our full colour palette and door choices available, see page 25.

What next?

Your LochAnna Handmade dealer will be able to guide you through the next steps, but it's all about your choices and preferences. They will be keen to understand what you want to see in your new kitchen and how you will use the space. Which of the Handmade colours are catching your eye and which door style is working best for you.

But please, be brave, hopefully our brochure will provoke you into making some choices you otherwise might not have made. Be confident in your vision and you will enjoy being a LochAnna Handmade kitchen owner for many years to come.

Newbridge

A classic solid timber shaker with a pared back aesthetic.



Door styles available.



Woodgrain
Plain Frame



Smooth
Plain Frame



Woodgrain
Cockbead Frame

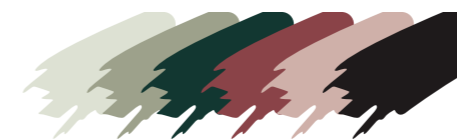


Smooth
Cockbead Frame

Newbridge has a timeless appeal.

The simple shaker style will look just as beautiful in years to come as it does on day one. With the option of a cockbead around the inside of the frame, Newbridge can be injected with classic styling for a more cottage feel.

With door choices in European white oak and smooth or woodgrain timber painted in the colour of your choosing, you can express your personality and creative flair. An extensive range of decorative accessories and storage solutions, added to the option of plain or cockbead frame, gives you scope to customise your kitchen and create a completely original design.



For our full colour palette and door choices available, see page 25.





Newbridge Brigade and Taupe

The neutral warmth of Taupe is the perfect pairing for the earthy green of Brigade. This kitchen is packed with beautiful features, from the curved barrel units with oak chopping boards, through to the subtle curves of the Sloane mantle shelf with corbels. Handles featured: H1105 Knob and H1106 Handle



Newbridge Desert Pink and Indigo

The contrasting colours make for a dramatic aesthetic on this kitchen, pairing Indigo with Desert Pink. The pastry bench introduces a cottage feel whilst also functioning as a practical preparation area. The oak mantel shelf ties together beautifully with the chopping board and tray display unit. Handle featured: H1108 Handle

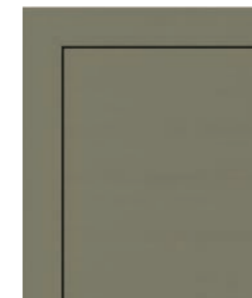


Lifford

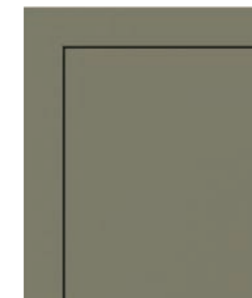
Simplicity of form, the perfect blank canvas to create your one-of-a-kind dream kitchen.



Door styles available.



Woodgrain
Plain Frame



Smooth
Plain Frame



Woodgrain
Cockbead Frame



Smooth
Cockbead Frame

Lifford brings a refined, contemporary vibe to the inframe kitchen concept.

The perfect blend of sleek, modern design and classic touches. Beading detail around the inside of the frame can be added for a touch of character.

Decorative features and accessories, a choice of door materials and finishes, a carefully curated colour palette... Lifford has every ingredient to allow you and your kitchen designer to work together and create something truly special that you will love for years to come.



For our full colour palette and door choices available, see page 25.





Lifford Auburn and Stone

The rich auburn is offset beautifully by the stone on the island in this colour scheme. The white oak in the wine display unit and open unit adds warmth and texture. Extra tall cupboards either side of the walk-in pantry provide ample additional storage. Handles featured: H1090 Eclipse Handle and H1089B Knob and Back Plate.



Lifford White Oak, Pearl and Midnight

This kitchen is all about textures and colours working in harmony to create a bold yet natural feel. The white oak softens the lines of the slab door and brings an organic element to the overall design. Reeded glass doors in the dresser add a contemporary twist. Handles featured: H1103 Knob and H1104 Handle



Door Selector

All our doors are manufactured from solid wood; from European white oak, through to ash for the woodgrains and beech for the smooth finishes. With a choice of door style and colour, you can truly customise your kitchen; keep it simple with a plain frame, or choose a cockbead frame to add another dimension.

Newbridge



Woodgrain Plain Frame



Smooth Plain Frame



Woodgrain Cockbead Frame



Smooth Cockbead Frame

Lifford



Woodgrain Plain Frame



Smooth Plain Frame

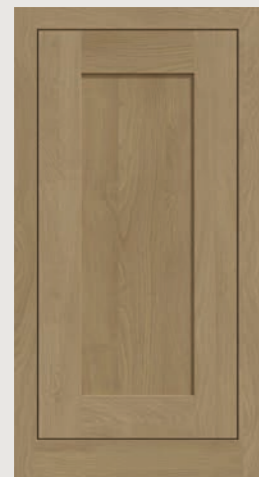


Woodgrain Cockbead Frame

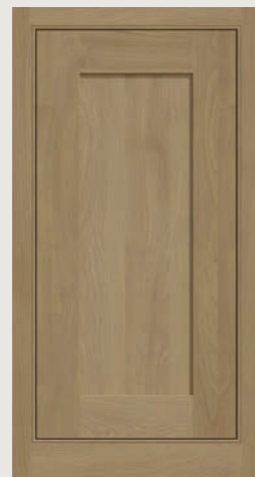


Smooth Cockbead Frame

Newbridge WhiteOak

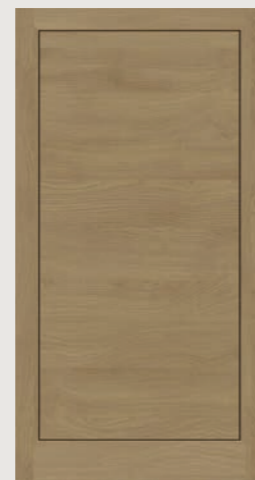


Plain Frame

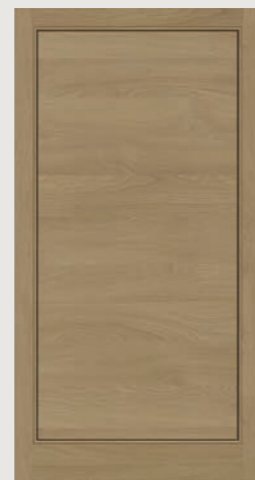


Cockbead Frame

Lifford White Oak



Plain Frame



Cockbead Frame

Colour Palette

We know how important colour choice is when it comes to your new kitchen. Our colour palette has been carefully curated to include a beautiful mix of subtle neutrals, through to bold yet tasteful hues. If you have your heart set on a colour that is not in our palette, we can paint your kitchen in your chosen shade using our Colour Matching Service.



colour matching service

Have your kitchen painted in the colour you've always dreamed of. Simply provide us with a recognised colour reference and we'll do the rest! Ask your kitchen designer for further details.

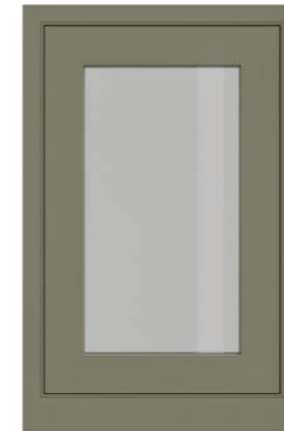
Glazed Door Styles

When you have beautiful ornaments or accessories you would like to display, a glazed cupboard is the perfect way to achieve this whilst keeping your treasured trinkets free from dust. Our door glazing styles allow you to tailor the look to your individual taste.

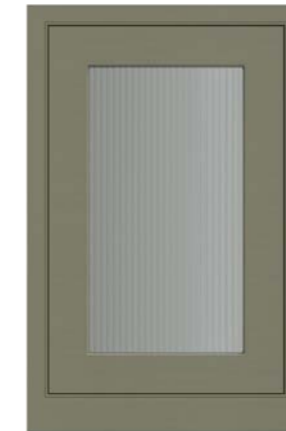


Our glass doors are available in all of the finishes shown on page 25 with the glazing styles below. All door styles are available for standard and extra tall cabinets, as well as dresser cabinets.

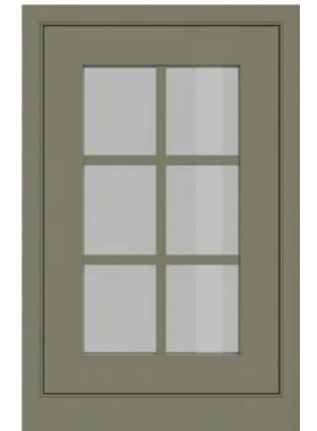
Newbridge doors



Plain Frame
(Plain Glass)



Plain Frame
(Reeded Glass)



Georgian Frame



Feature Frame



Georgian Feature Frame

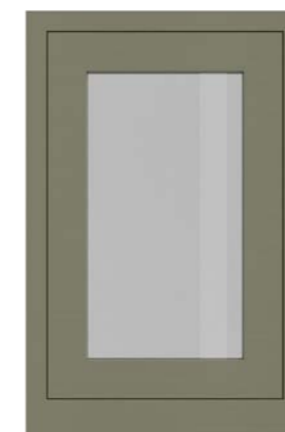


Arch Frame

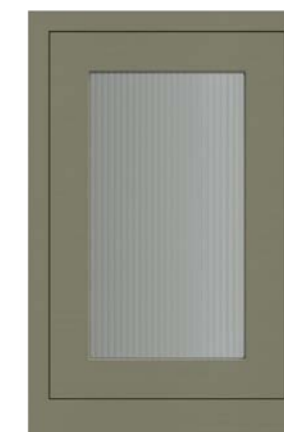


Cross Frame

Lifford doors



Plain Frame
(Plain Glass)



Plain Frame
(Reeded Glass)

Finishing Touches

Beautiful and functional storage, decorative accessories and display cupboards can all be incorporated in your design to elevate your kitchen and create a unique space that you'll love to spend time in.



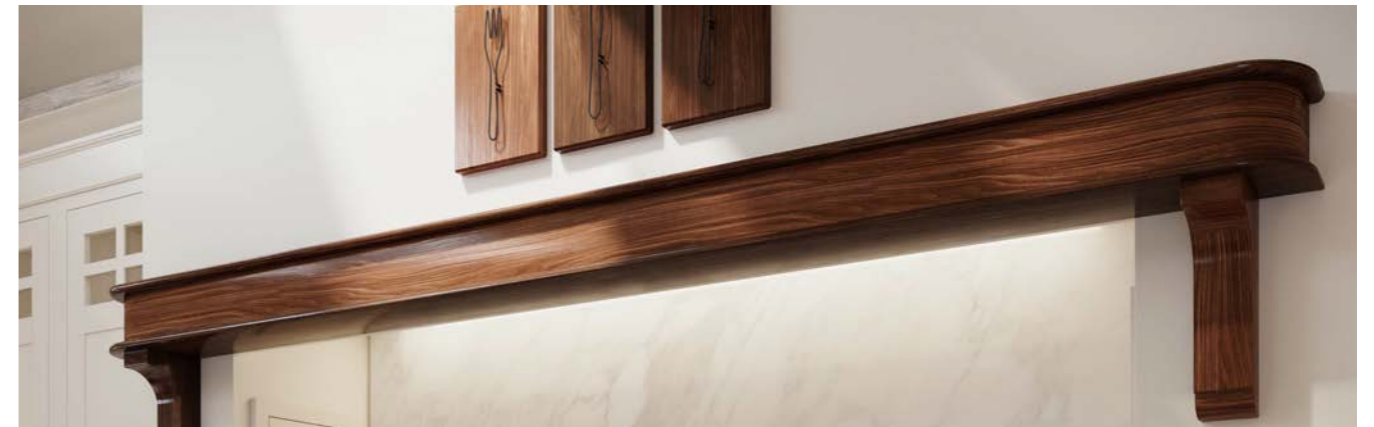
Pantry Internals



Canopies



Mantle Shelves



Feature & Display Units



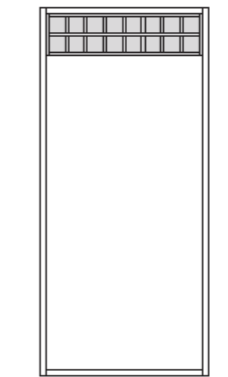
Handles



Pantry Internals



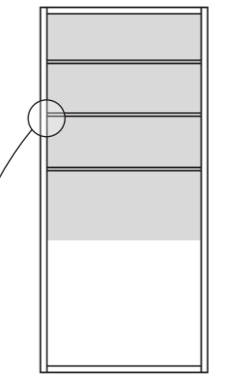
A well-designed pantry can not only be used for storage, but also a practical, hardworking space that will enhance how the whole family uses the kitchen. Our beautiful and functional internal options allow you to customise your pantry. Available for 600mm wide and 1000mm wide cabinets.



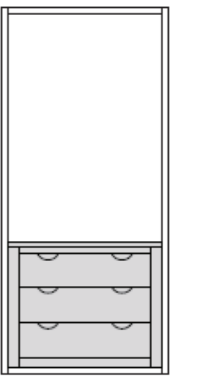
**Wine Rack
Top section**
(Oak or Walnut Veneer)



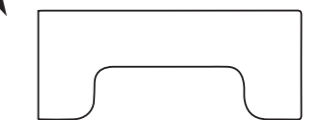
**Glass Holder
Top section**
(Oak/Walnut Veneer
& Solid Oak/Walnut)



**Feature Shelves
Top section**
(Solid Oak or Walnut)



**Internal Drawer
Bottom section**
(Solid Oak or Walnut)



**Bird's-eye view
of the feature
shelves**



Spice Racks

Our spice racks are hand crafted from solid white oak or walnut, with a veneered backing board. They can be made to varying widths to suit your cupboard door and our three heights allow you to tailor them to your pantry.

sizes available

800mm | 1150mm | 1860mm

Canopies & Mantle Shelves



Whether you prefer a statement piece or understated elegance, our range of canopies and mantle shelves can cater for your desired aesthetic. Pairing your mantle shelf with corbels, as shown in the image above, adds a touch of charm. All options are available in white oak, walnut or painted in a smooth or woodgrain finish and can be made up to 2400mm wide.

Newbridge Canopies

The frontals on these canopies will match the styling of the Newbridge door



Newbridge Findlay Canopy



Newbridge Carter Canopy



Newbridge Ennis Canopy

Lifford Canopies

The frontals on these canopies will match the styling of the Lifford door



Lifford Findlay Canopy



Lifford Carter Canopy



Lifford Ennis Canopy

Standard Canopies



Prior Canopy



Kinlaw Canopy

Mantle Shelves



Sloane Mantle Shelf



Garvey Mantle Shelf



Moran Mantle Shelf



Asher Mantle Shelf



Downey Mantle Shelf

Features & Display Units

The features and accessories you choose for your Handmade kitchen are what can elevate it from a purely functional space to something truly unique. From useful storage to pieces that allow you to display your favourite decorative items.

Open Display Unit



Display your treasured decorative items in an open display unit. Available with white oak, walnut or painted internals in widths between 300-1200mm. These units can be fitted alongside base or wall units.

Wine Rack Display Unit



A beautiful combination of open display unit and wine storage. The internals can be white oak as shown here, walnut or matched to the kitchen frontals. Available in widths from 300-1200mm.

Pastry Bench with Drawers



Create a focal point in your kitchen design with a pastry bench. A practical food preparation area, the bench is available with or without drawers. Choose to have a white oak or walnut butcher's block or order without and top with a surface to match your kitchen. Sized at 1000x500mm.

Pastry Bench



Crate Unit



These units create a focal point in your kitchen design, whilst also providing functional storage with pull out crates. Available in widths between 300-1200mm and with white oak or walnut crates.

Tray & Chopping Boards Unit



The beautiful white oak or walnut chopping boards and trays slot perfectly into a purpose built unit with a frame to match the other kitchen frontals. Sized at 200mm wide.

Base X-Box Wine Display Unit



A beautiful way to store your wine collection which integrates seamlessly into your kitchen design. Available with white oak or walnut internals or painted to match the frontal. Sized at 600mm wide.

Wall X-Box Wine Display Unit



A more compact wine display unit to be fitted as a wall unit. Match the internals to your kitchen colour or contrast by opting for white oak or walnut internals. Sized at 500x500mm.

Curved Barrel Unit



Iconic pieces can be the defining feature of a kitchen. Available with or without the chopping boards, our barrel cabinets are an eye-catching focal point that double up as practical storage.

The optional butchers block solid white oak or walnut top perfectly completes this stunning feature.

Plate Rack Display Unit



Beautiful crockery deserves to be displayed. Our bespoke plate rack display cupboards can be made from 300mm wide up to 1200mm wide.

The white oak option shown here gives a touch of richness, or you can have the cupboard in walnut or painted the same colour as your kitchen.

Bridging Wine Rack



A beautiful way to store your favourite wines. Our wine rack display unit is available with walnut or white oak internal section as shown here, or fully painted the same colour as your kitchen.

Designed to sit bridging the space above a double fridge freezer or larder.

Handles

Our suite of handles has been carefully chosen to complement the style of our Handmade kitchens.



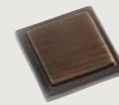
H1108 Curved D Handle
Brushed Satin Nickel
147mm Long x 15mm Thick
128mm Centres | 28mm Projection



H1107 Square Knob
Brushed Satin Nickel
34mm Diameter
25mm Projection



H1106 Curved D Handle
American Bronze
147mm Long x 15mm Thick
128mm Centres | 28mm Projection



H1105 Square Knob
American Bronze
34mm Diameter
25mm Projection



H1051 Cup Handle
American Copper
104mm Long x 48mm High
64mm Centres | 30mm Projection



H1052 Knob
American Copper
38mm Diameter
32mm Projection



H1049 Cup Handle
Black Nickel
104mm Long x 48mm High
64mm Centres | 30mm Projection



H1050 Knob
Black Nickel
38mm Diameter
32mm Projection



H1104 D Handle with back plate
Brushed Satin Brass
170mm Long x 21mm Thick
128mm Centres | 38mm Projection



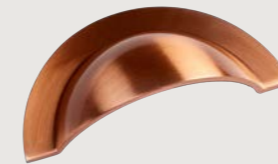
H1103 Knob with back plate
Brushed Satin Brass
32mm Diameter | 32mm Projection
Backplate: 56mm long



H1102 D Handle with back plate
American Bronze
170mm Long x 21mm Thick
128mm Centres | 38mm Projection



H1101 Knob with back plate
American Bronze
32mm Diameter | 32mm Projection
Backplate: 56mm long



H1045 Cup Handle
Brushed Copper
104mm Long x 48mm High
64mm Centres | 30mm Projection



H1046 Knob
Brushed Copper
38mm Diameter
32mm Projection



H1047 Cup Handle
Brushed Satin Brass
104mm Long x 48mm High
64mm Centres | 30mm Projection



H1048 Knob
Brushed Satin Brass
38mm Diameter
32mm Projection



H1098 Bar Handle
Matt Black
210mm Long x 19mm Thick
128mm Centres | 37mm Projection



H1097 T-Bar Knob
Matt Black
82mm Long x 19mm Thick
37mm Projection



H1096 Bar Handle
Polished Nickel
210mm Long x 19mm Thick
128mm Centres | 37mm Projection



H1095 T-Bar Knob
Polished Nickel
82mm Long x 19mm Thick
37mm Projection



H1057 Scalloped Cup Handle
Brushed Satin Nickel
155mm Long x 31mm High
128mm Centres | 29mm Projection



H1058 Round Scalloped Knob
Brushed Satin Nickel
40mm Diameter
37mm Projection



H1055 Scalloped Cup Handle
Black Nickel
155mm Long x 31mm High
128mm Centres | 29mm Projection



H1056 Scalloped Knob
Black Nickel Round
40mm Diameter
37mm Projection



H1100 Bar Handle
Dark Brushed Brass
210mm Long x 19mm Thick
128mm Centres | 37mm Projection



H1099 T-Bar Knob
Dark Brushed Brass
82mm Long x 19mm Thick
37mm Projection



H1044 Cup Handle
Satin Brass
97mm Long x 37mm High
64mm Centres | 24mm Projection



H1043 Round Knob
Satin Brass
40mm Diameter x 35mm High



H1053 Scalloped Cup Handle
American Copper
155mm Long x 31mm High
128mm Centres | 29mm Projection



H1054 Scalloped Knob
American Copper Round
40mm Diameter
37mm Projection

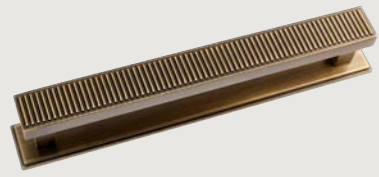


H1030 Cup Handle
Antique Bronze
95mm Long x 30mm High
64mm Centres | 28mm Projection

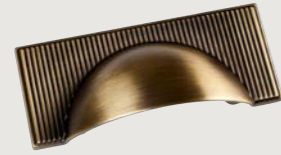


H1031 Knob
Antique Bronze
30mm Diameter x 26mm High

Handles



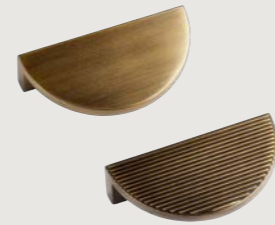
H1082 Bar Handle (no back plate)
Dark Brushed Brass
180mm Long x 20mm Thick
160mm Centres | 30mm Projection



H1083 Cup Handle
Dark Brushed Brass
105mm Wide x 45mm High
64mm Centres | 24mm Projection



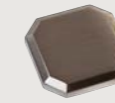
H1084 Knob (no back plate)
Dark Brushed Brass
32mm Diameter | 29mm Projection



H1086 Smooth Eclipse Handle
Dark Brushed Brass
80mm Wide x 40mm High
64mm Centres | 26mm Projection



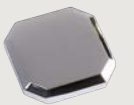
H1059 Bevelled D Handle
Brushed Satin Nickel
142mm Long x 14mm High
128mm Centres | 34mm Projection



H1060 Bevelled Knob
Brushed Satin Nickel
34mm Long x 34mm High
23mm Projection



H1061 Bevelled D Handle
Chrome
142mm Long x 14mm High
128mm Centres | 34mm Projection



H1062 Bevelled Knob
Chrome
34mm Long x 34mm High
23mm Projection

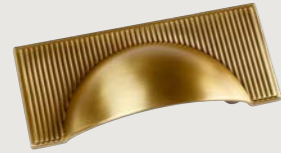
H1082B Bar Handle (with back plate)
Dark Brushed Brass
190mm Long x 25mm Thick
160mm Centres | 34mm Projection

H1084B Knob (with back plate)
Dark Brushed Brass
32mm Diameter | 33mm Projection
Back Plate: 100mm Long x 25mm Wide

H1085 Ribbed Eclipse Handle
Dark Brushed Brass
80mm Wide x 40mm High
64mm Centres | 26mm Projection



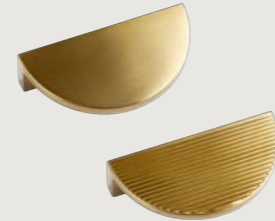
H1087 Bar Handle (no back plate)
Brushed Satin Brass
180mm Long x 20mm Thick
160mm Centres | 30mm Projection



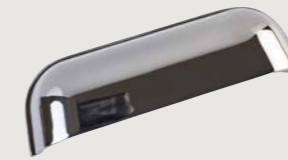
H1088 Cup Handle
Brushed Satin Brass
105mm Wide x 45mm High
64mm Centres | 24mm Projection



H1089 Knob (no back plate)
Brushed Satin Brass
32mm Diameter | 29mm Projection



H1091 Smooth Eclipse Handle
Brushed Satin Brass
80mm Wide x 40mm High
64mm Centres | 26mm Projection



H1020 Cup Handle
Chrome
130mm Long x 38mm High
64mm Centres | 28mm Projection



H1022 Cup Handle
Chrome
104mm Long x 32mm High
64mm Centres | 23mm Projection



H1025 Round Knob
Chrome
59mm Long x 43mm High
38mm Projection



H1027 Square Knob
Chrome
59mm Long x 43mm High
38mm Projection

H1087B Bar Handle (with back plate)
Brushed Satin Brass
190mm Long x 25mm Thick
160mm Centres | 34mm Projection

H1089B Knob (with back plate)
Dark Brushed Brass
32mm Diameter | 33mm Projection
Back Plate: 100mm Long x 25mm Wide

H1090 Ribbed Eclipse Handle
Brushed Satin Brass
80mm Wide x 40mm High
64mm Centres | 26mm Projection



H1024 Cup Handle
Black Satin
104mm Long x 32mm High
64mm Centres | 23mm Projection



H1026 Round Knob
Black Satin
59mm Long x 43mm High
38mm Projection



H1028 Square Knob
Black Satin
59mm Long x 43mm High
38mm Projection



H942 D Handle
Antique Pewter
140mm Long x 24mm High
96mm Centres



H1092 Bar Handle (no back plate)
Matt Black
180mm Long x 20mm Thick
160mm Centres | 30mm Projection



H1093 Cup Handle
Matt Black
105mm Wide x 45mm High
64mm Centres | 24mm Projection



H1094 Knob (no back plate)
Matt Black
32mm Diameter | 29mm Projection



H943 Cup Handle
Antique Pewter
96mm Long x 20mm High
64mm Centres



H1009 Round Knob
Antique Pewter
40mm Diameter x 35mm High



H150 Cup Handle
Chrome
90mm Long x 20mm High
76mm Centres



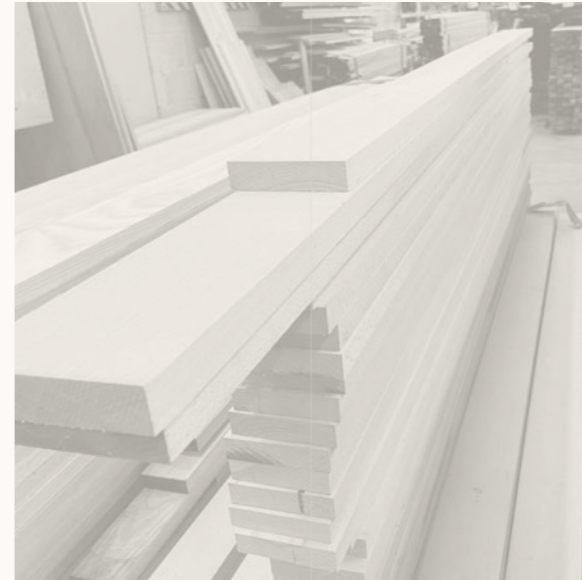
H1080 Cup Handle
Matt Black
90mm Long x 20mm High
76mm Centres

H1092B Bar Handle (with back plate)
Matt Black
190mm Long x 25mm Thick
160mm Centres | 34mm Projection

H1094B Knob (with back plate)
Matt Black
32mm Diameter | 33mm Projection
Back Plate: 100mm Long x 25mm Wide

H149 Knob
Chrome
25mm Diameter x 30mm High

H1081 Knob
Matt Black
36mm Diameter x 45mm High

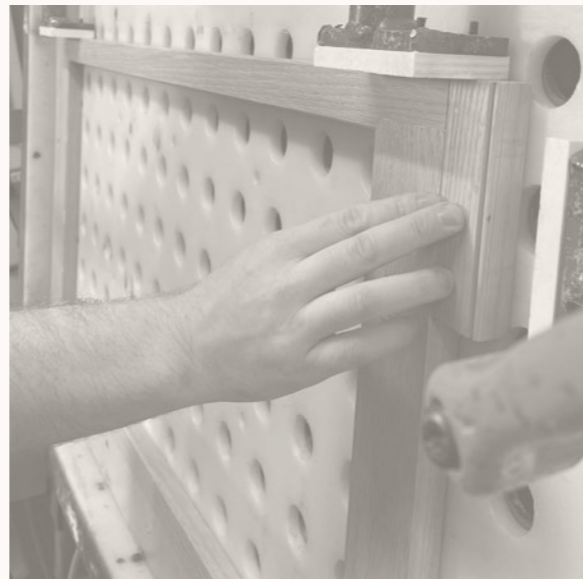


Guarantee

Our Handmade kitchens are manufactured to the highest standards with the utmost care and attention, using the best materials.

We build to last, however we also know that problems can sometimes arise. So in case you ever need it, we offer a 10 year guarantee against manufacturing defects on all of our furniture.

We doubt you'll ever need it, but we hope this gives you peace of mind.



LochAnna
—Handmade—

BEAUTIFULLY CRAFTED INFRAME KITCHENS